



VOLUNTEER OPPORTUNITY: Charles River Environmental Watch (CREW)--Stewards

Interested in helping to care for the parks and ecosystems along the Charles? The Charles River Conservancy is recruiting volunteers for the third year of our Charles River Environmental Watch (CREW) Stewards Program and is searching for people interested in land stewardship!

As a member of the CREW Stewards program, you can make a meaningful difference on your own schedule, from reporting on pathway and vegetation conditions, to trash and invasive plant removal in your assigned park section. Once you've received the training and supplies needed, go out as often as you are able and have fun!

Eligibility

To be eligible, prospective volunteers must:

- Be at least 18 years old
- Be physically able to monitor and perform minor maintenance of their assigned park area
- Have a strong interest in stewardship of urban parks and ecosystems
- Commit to stewarding their park area for at least one year
- Complete a background check and fill out a waiver

Responsibilities

- Perform general monitoring of assigned park area on a monthly basis, including invasive species, garbage dumping, and any hazards
- Document changes in the park areas via photos and written descriptions
- Fill out an online monitoring report after each visit
- Notify CRC staff directly about urgent problems
- Litter and debris clean-up
- Conduct invasive species monitoring and, if you attend additional mandatory trainings, invasive species removal
- Act as an ambassador to park users when visiting assigned park area
- If you see a view or anything else you think is worth sharing, take a photo and share with the CRC team! We will share it on our social media with credit to you.

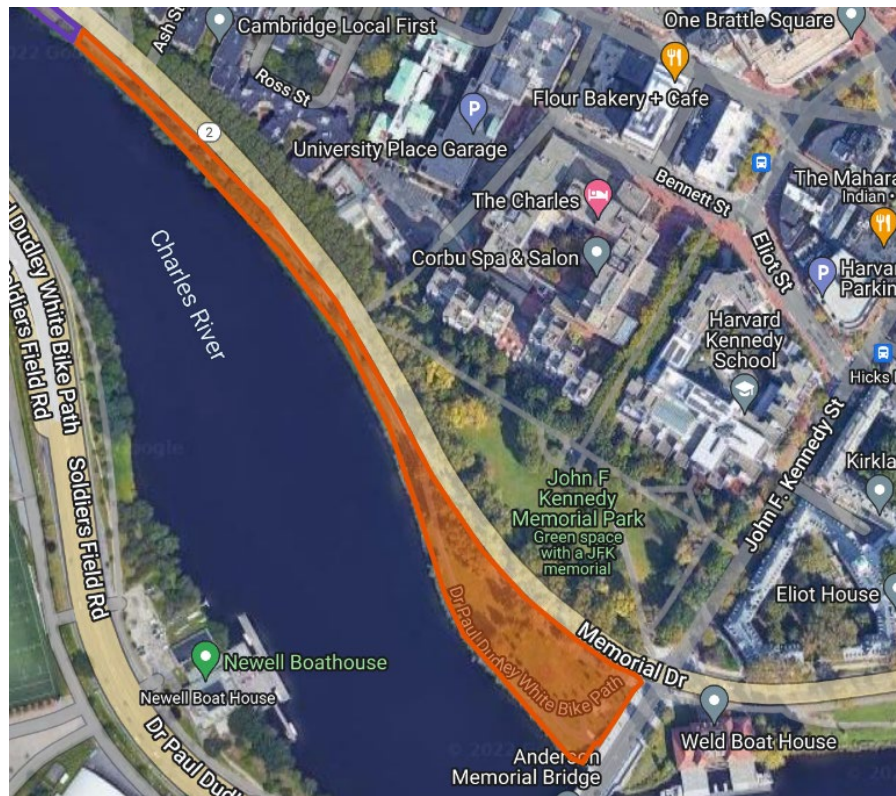
How to join the CREW Stewardship Program

To apply to be a member of the CREW Stewards, please fill out an application found on our website! CRC staff will be in touch with you to arrange an interview that will help us get to know you better and gauge what site and responsibilities would be best suited for you. All prospective CREW Stewardship members also get to attend training sessions and a site orientation. Once those are completed, the CRC will provide members with all the materials needed to care for your assigned sites and maintain email communication to provide any pertinent news and updates.

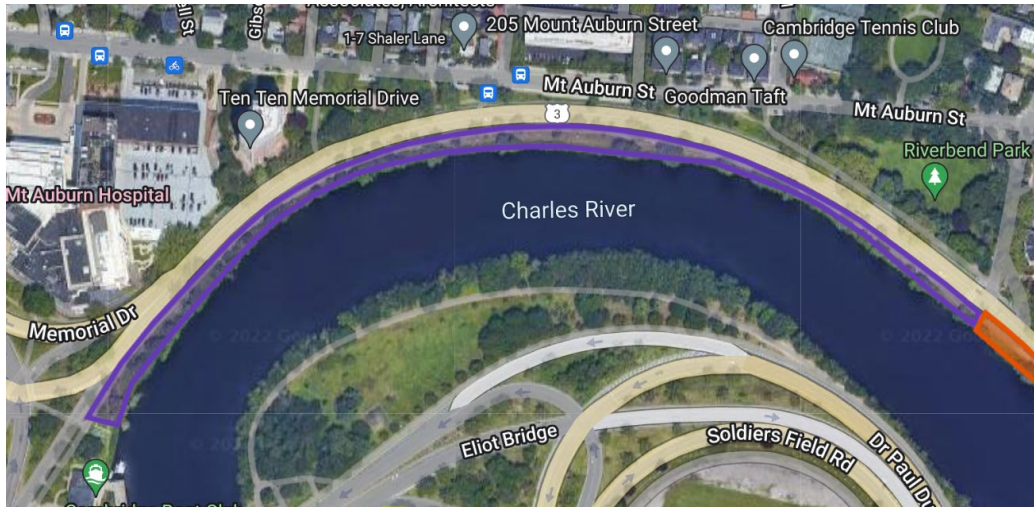
Questions? Email us at volunteer@thecharles.org.

Available Locations

- **Memorial Drive (Hawthorn St. to Anderson Bridge)**
 - This section includes a thin strip of park and a wider section of lawn near the Anderson Bridge. There is a bike path and a vegetated river bank that will require a lot of attention for invasive plant management. The ideal CREW member for this spot is local to Cambridge, has an interest in focusing on invasive plants, and might have time to attend scheduled volunteer days in this location for invasive removal.



- **Memorial Drive (Cambridge Boat Club to Hawthorn St.)**
 - This section is a thin strip of park about a half mile long, which includes the bike path and a vegetated river bank. This is a fairly small section, but it is heavy with Asiatic bittersweet! The ideal CREW member for this spot is local to Cambridge, has an interest in focusing on invasive plants, and might have time to attend scheduled volunteer days in this location for invasive removal.



- Memorial Drive (Boston University Boathouse to Sea Wall)**

- This is a short section that receives a lot of foot and bike traffic. The main focus here will be litter removal, where you can make a big impact by preventing trash from entering the Charles River. Also, as this area's shoreline was recently restored with native plantings, the CREW member would help monitor for any invasive plant growth. The ideal CREW member for this spot would be a Cambridge resident with easy access to the park.

