



CHARLES RIVER

conservancy

43 Thorndike Street, S3-3
Cambridge, MA 02141



Dear Friend,

At the Charles River Conservancy, we're often reminded how resilience takes shape—not just in the river that finds its way, but in the people who protect it. From quiet meditative movements to joyful open gatherings, memories are made along this river at every moment. This year, despite uncertainty in national environmental priorities, our community stood strong. We adapted. We led. **And in 2026, we're ready to go even further.**

Over the past 25 years we've learned that lasting environmental change happens right here—locally, visibly, and with heart. Federal cutbacks have shaken many environmental programs, including ones we've depended on for decades, but our supporters have shown what real community resilience looks like. **Because of you, our mission continues to flow as steadily as it ever has.**

Next year, we'll take local action to meet global challenges head-on by:

- Strengthening **climate resilience** by expanding green infrastructure through our floating wetland and riverbank restoration projects.
- Building **community resilience** by deepening partnerships with educators, local artists, and volunteer groups to make the parks more accessible, inclusive, and vibrant.
- Fortifying **organizational resilience** through strategic capacity-building and coalition-based advocacy to help us respond swiftly to evolving needs and uncertainties.

This is your invitation to shape an adaptable, sustainable future with us. **Give today and help keep the urban Charles River and its parks cleaner, healthier, and more resilient for all.**

With gratitude and hope,

Laura Jasinski
Executive Director



Gautam Sundaram
Board Chair



Ways To Give:

- Make it monthly
- Give via your donor-advised fund
- Ask about employer-match
- Give a gift of stock
- Give in celebration of someone
- Learn about legacy giving

P.S. Our floating wetland expansion project is full speed ahead! We can't wait to show you what resilience looks like in bloom.

What memory will you make next on the Charles?



BOARD OF DIRECTORS

Laura Jasinski
Executive Director
Gautam Sundaram, Chair
Craig Bida
Nathan Gauthier
Lonsdale G. Koester
Rohan Kundargi
Frans Lawaetz

BOARD OF ADVISORS

Renata von Tschamer
Founder
Ronald Axelrod
Jeffrey Bilezikian
Dennis Carlone
Phillip W. Crutchfield
John DeVillars
Catherine Donaher

Hon. Michael S. Dukakis
Michael Epstein
Paul Fremont-Smith Jr.
Jennifer Gilbert
John Isaacson
Mark Kraczkiewicz
Daniel Langenthal
Edward G. LeFlore

Linda Lerner
Ania Masinter
Harry Mattison
Geraldine Pangaro
Randy Peeler
Matthew Petrie
Amy Segal
John Shields

Ann Tikkanen
Paul Walker
Hon. Michelle Wu

Photos: Hans Nedde,
Tucker Horan, Aaron
John Bourque



The Charles River Community



Charles River Floating Wetland Designing for Resilience: Expansion Phase

Buoyed by the success of our national award-winning Charles River Floating Wetland pilot installation, we are eager to **build more floating wetlands along the Broad Canal**—transforming industrial seawalls into green habitats thriving with native biodiversity. With the addition of a dedicated Project Manager and renewed community partnerships, we're scaling up our commitment to climate resilience, urban river restoration, and **environmental education through outreach programming** like leading immersive paddle trips and distributing hands-on STEAM kits in local classrooms. Floating wetlands are growing opportunities for learning and renewal, proving that with vision and collaboration, hope floats!

Lynch Family Skatepark Co-Creating Public Art for Spatial Justice

Lynch is fast becoming a creative mecca along the Charles—an open space where both experienced and emerging street artists converge to paint and push the boundaries of public art. Hot off the success of our inaugural season, we are expanding this energy in 2026 with our second annual **Graffiti Artist-in-Residence** program, to continue transforming the skatepark Free Walls into living galleries of expression and connection. The Charles River Conservancy continues to sustain open dialogue with the unique, often underserved Lynch community through the **Skatepark Advisory Group**, ensuring our park efforts reflect authentic voices and needs.



Swimmable Charles Initiative Cultivating a Swimmable City

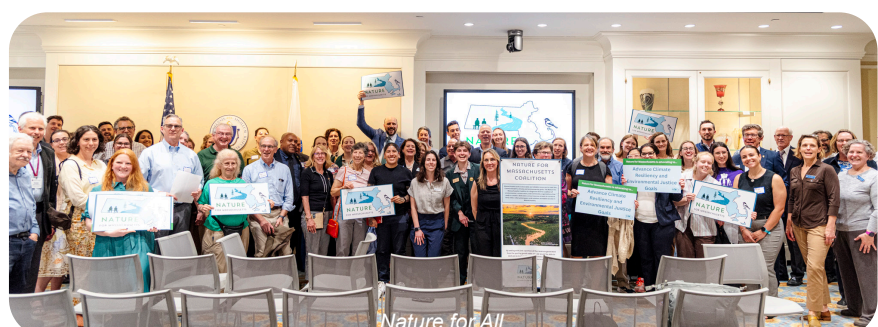
While this year's river swim was cancelled, the Charles River Conservancy is redoubling its efforts to make 2026 our comeback year for City Splash. To achieve our vision for a **truly swimmable Charles**, we continue to advocate for long-term investments that support climate resilience (a bold trend led by cities like Paris, Chicago, and New York). But this effort is about more than infrastructure—it's **about joy**. River swimming connects us to nature, to each other, and to one of Boston's greatest public treasures. On a hot summer day, there's no better reminder of why we do this work: a cool dip in an urban river open to all.

Park Stewardship Galvanizing Community Through Nature

Next season, the Charles River Conservancy's park stewardship work is growing deeper roots—literally. Together with our partners at DCR, we'll continue restoring Hell's Half Acre by **replanting native species** that strengthen the river's biodiversity and resilience (see *insert for more details on this exciting project*). We'll also work with certified arborists to support **tree canopy health** for over 30 trees along Greenough Boulevard, improving soil health and boosting structural longevity. And through hands-on programs like volunteer group cleanups and CREW (Charles River Environmental Watch), we'll nurture a cycle of care and community along the river's edge.



Advocacy Building a Resilient Future



We're rolling up our sleeves in 2026 for a more resilient Massachusetts. As members of several **advocacy-based coalitions**, we're championing big, practical wins—like the Nature for All bill and its ballot-question analog, the Protect Water and Nature Initiative—aimed at securing steady funding to protect our rivers, parks, and wetlands. We're also celebrating successive milestones as DCR advances construction on the Memorial Drive Greenway Improvements, Phase III Project. And while the Allston Multimodal Project undergoes changes in the wake of drastic federal funding cuts, we are keeping a close eye on ensuring the project's design delivers benefits that align with the state's environmental justice, climate, and biodiversity goals.



The River Bank

The Annual Fund of the Charles River Conservancy

The Charles River Conservancy appreciates your contributions to The River Bank, the annual fund that supports our daily work and special projects and programs. All donors will be recognized by the CRC on our website and Annual Report and receive special invitations to CRC events. A gift at any level is meaningful to us if it is meaningful to you.

Examples of how your gift contributes to the vitality of the Charles River and its parks include:

\$100-\$499

Inspiring the next generation of river stewards through educational classroom tools like *floating wetland activity kits*

\$500-\$999

Improving the river's health with activities that keep trash out of the river, like *park stewardship by our CRC volunteers*

\$1,000-\$2,499

Creating unique outdoor experiences, like *our annual City Splash river swim*

\$2,500-\$4,999

Supporting biodiversity and healthy ecosystems, such as *management of harmful invasive plant species*

\$5,000-\$9,999

Envisioning an accessible riverfront through our advocacy on projects like *the Nature for Massachusetts campaign*

\$10,000-\$24,999

Supporting arts and culture in our public parks with *partnership-building and community engagement*

\$25,000+

Enhancing the river's resilience, including *planning and design for an expanded floating wetland installation*

Grow Your Gift for 2026!

With an exciting capacity-building grant from an anonymous funder, we have a unique opportunity: **New or increased donations will be matched.**

This is your chance to amplify your impact and make your gift **go even further!**

Make a Contribution

The Charles River Conservancy depends on the generosity and support of individuals, foundations, and businesses to achieve its mission. To make a contribution to The River Bank, please make checks payable to Charles River Conservancy or visit us online at **thecharles.org/theriverbank**. For more information please contact **Laura Jasinski, Executive Director** at **(617) 300-8175** or **ljjasinski@thecharles.org**.

Help Us Restore Native Habitat

Your gift helps this unique ecosystem thrive!



Asclepias incarnata
(Swamp milkweed)



Maianthemum canadense
(Canada mayflower)



Polygonatum biflorum
(King Solomon's seal)



Verbena hastata
(Blue vervain)



The Charles River Conservancy is advancing its restoration work at **Hell's Half Acre**, an extraordinary 7.5-acre expanse of urban wild. Building on years of invasive species removal with support from the City of Cambridge and DCR, we will **restore and re-establish native plantings** in 2026 to strengthen biodiversity and wildlife habitat. *Learn more about Hell's Half Acre: thecharles.org/about/visit/#hha*